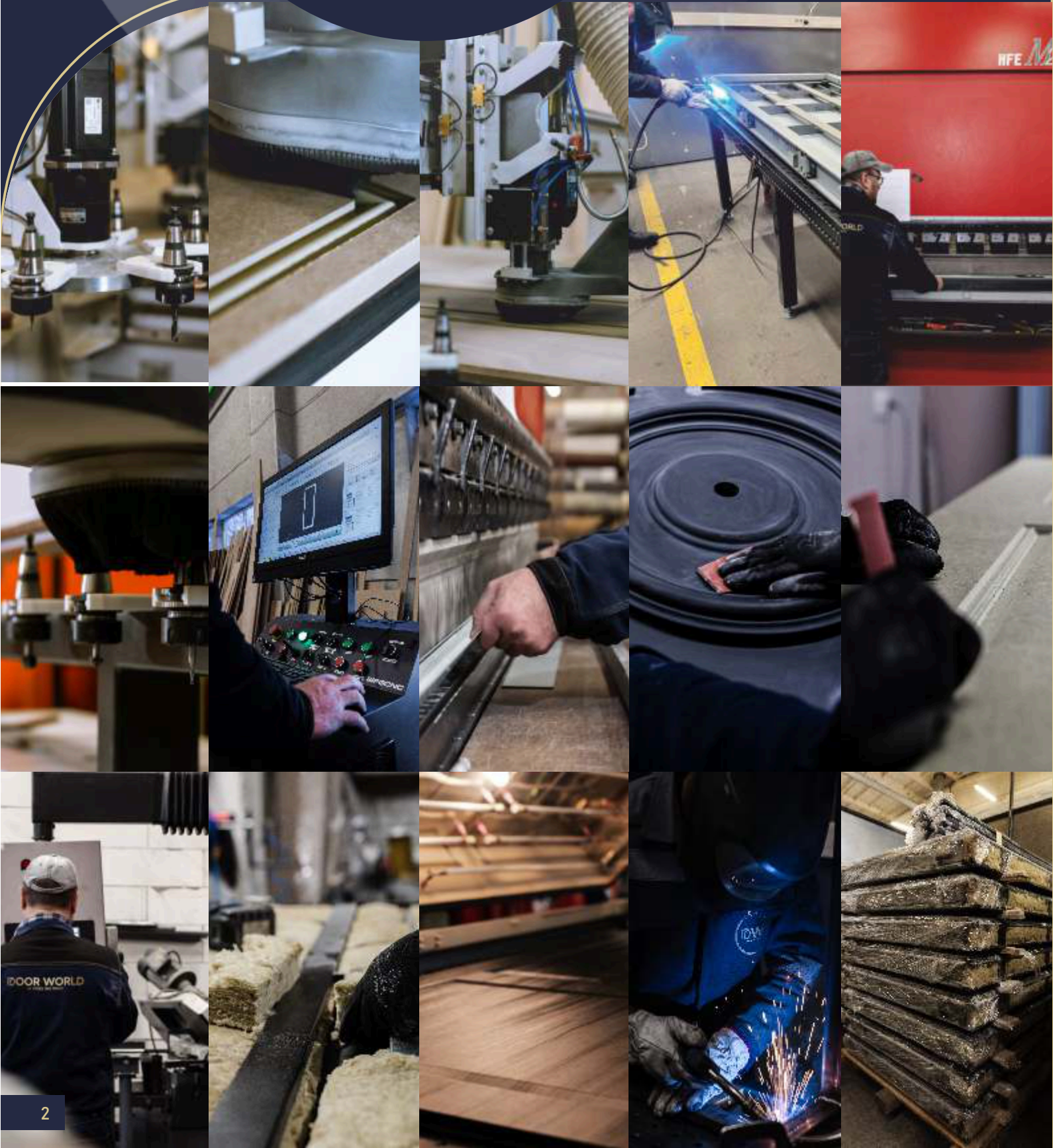


# LUX SECURITY



# FROM DESIGNING TO SHIPMENT





## APARTMENT DOORS

Panels for apartment doors are usually made of a PVC film laminated MDF panel. Advanced technology allows us to produce a durable finish of high quality. A wide range of designs, colours and shades are available.



Finishing material for painted entrance doors - sustainably sourced EDM board (Extreme Durable MDF). It is water resistant, dimensionally stable and withstands severe atmospheric changes, gives freedom of design therefore is ideal for finishing of entrance doors. It is given the warranty up to 50 years.

## ENTRANCE DOORS





# ENTRANCE DOORS





## ENTRANCE DOORS





## OKOUME

For clients who prefer wood-looking entrance door we offer WRB—water resistant board made of natural hardwood veneers (okoume). Its wood texture does not limit your design ideas and gives the luxury look to your door.



OKOUME

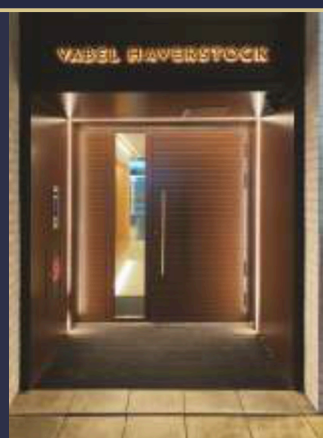






## BESPOKE DOORS

DOORWORLD doors are suitable for all commercial, residential and retail environments, providing the ultimate security solution.





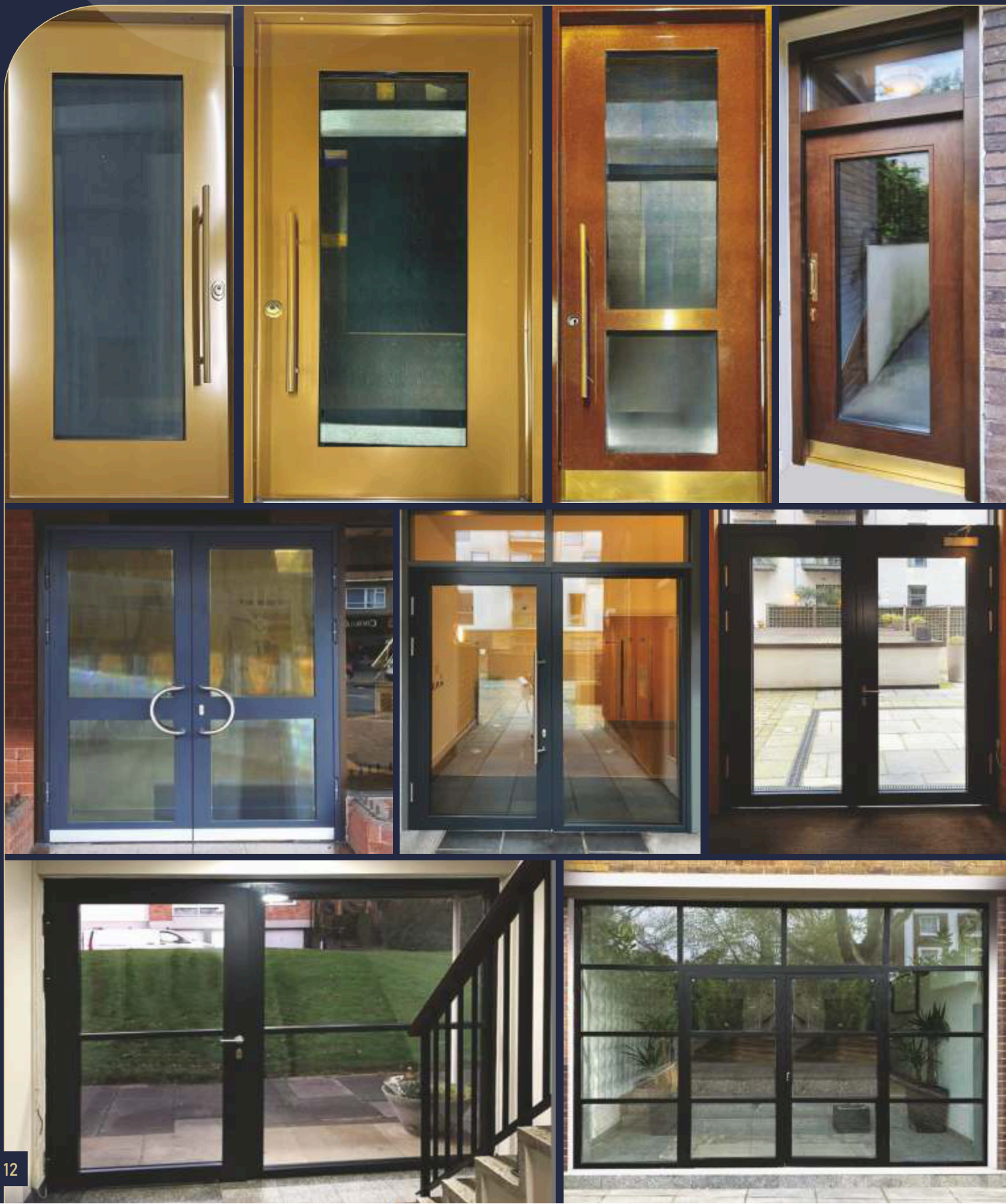


## BESPOKE DOORS



## GLASS DOORS

The DOORWORLD door range comes in triple glazing meaning that they have excellent thermal properties when installed in your home. Bulletproof glass can be fitted as an extra security option.





Marching original features is essential in maintaining the building's architectural heritage.

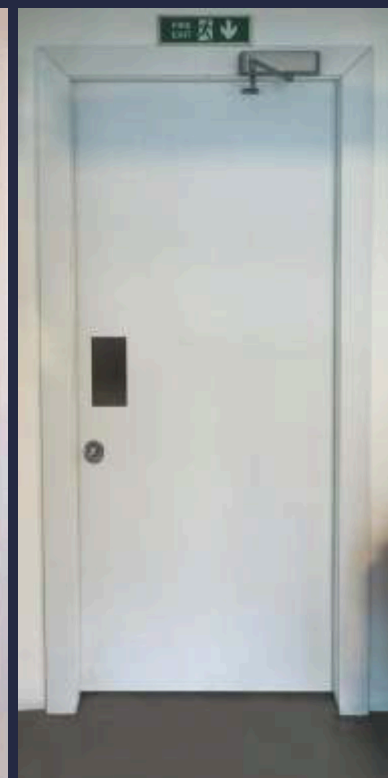
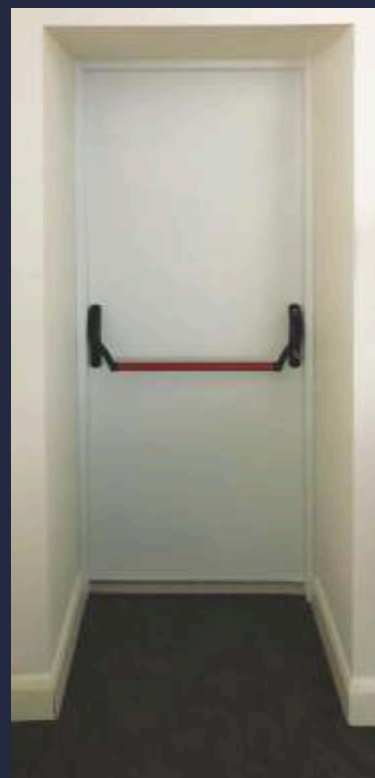
## REPLICA DOORS





## COMMERCIAL DOORS

The doors can be well fitted to the commercial or public where security and access control is required. The doors can be closed and locked by pressing the button from a distance.



Safe rooms, or panic, are there to provide an safe location inside your home. Think of panic room as a vault for your most valuable asset – your family. Their unique construction will deter and defeat any would be intruders.

## PANIC ROOMS





# GALLERY



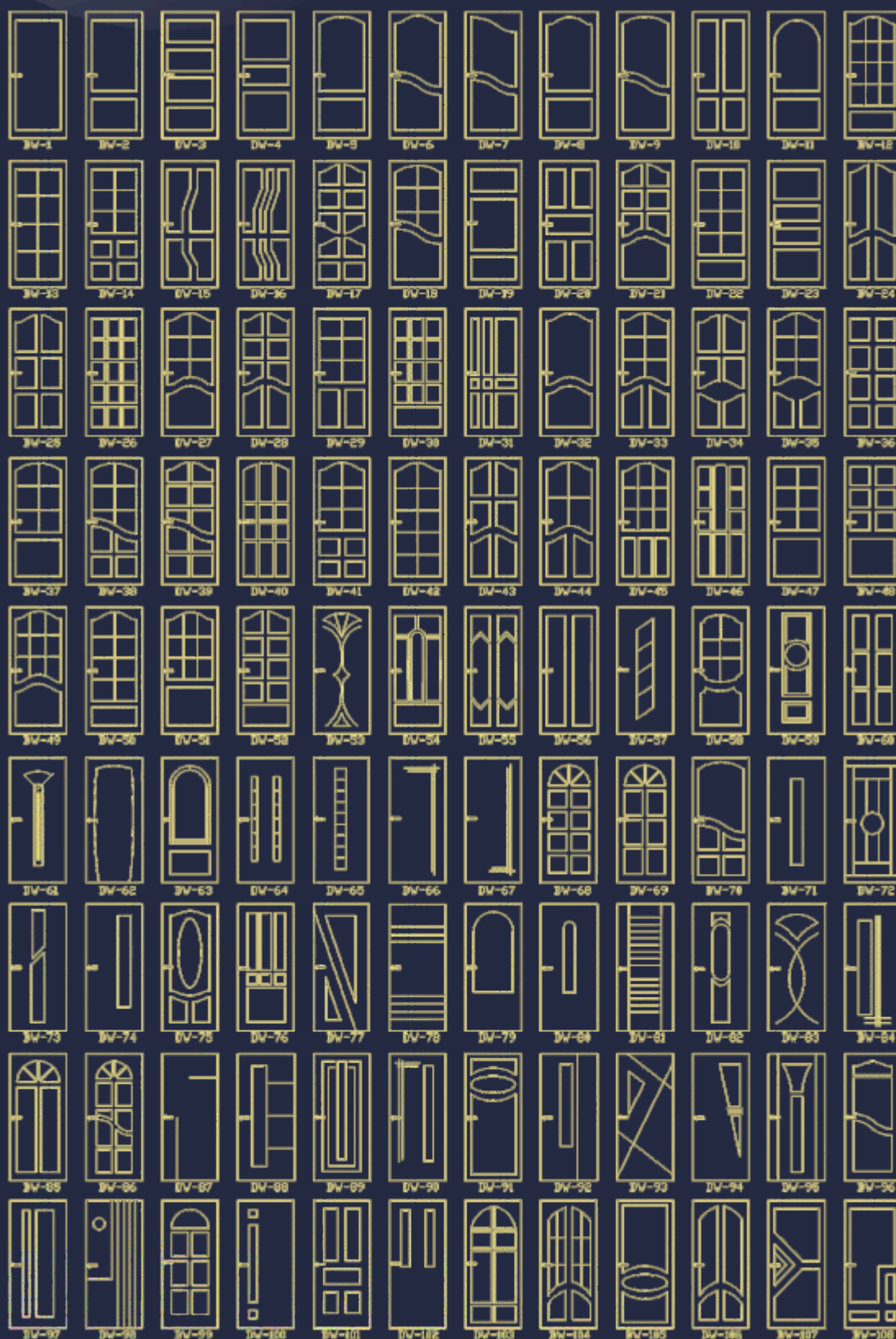


# GALLERY

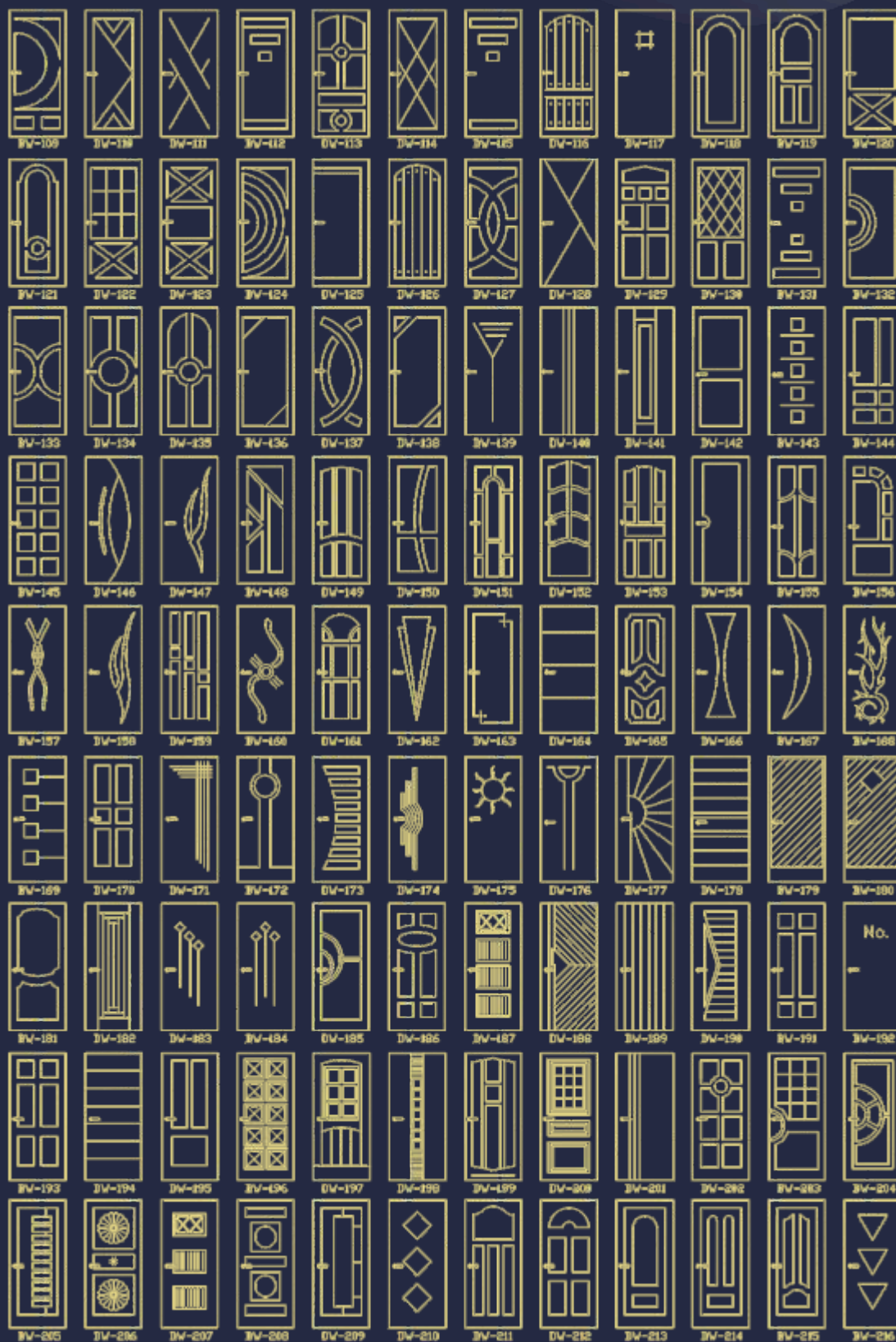




# CARVINGS

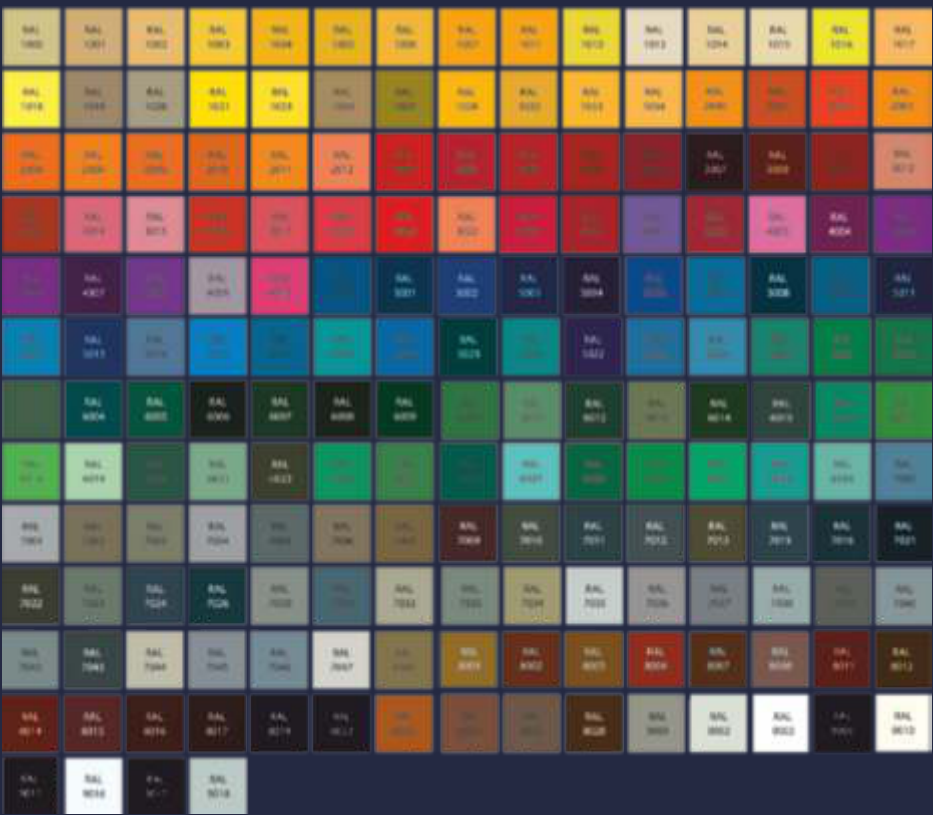


# CARVINGS





# COLOURS OF DOOR DECORATION PANELS FOR EXTERIOR AND INTERIOR DOOR



# COLOURS OF THE METAL



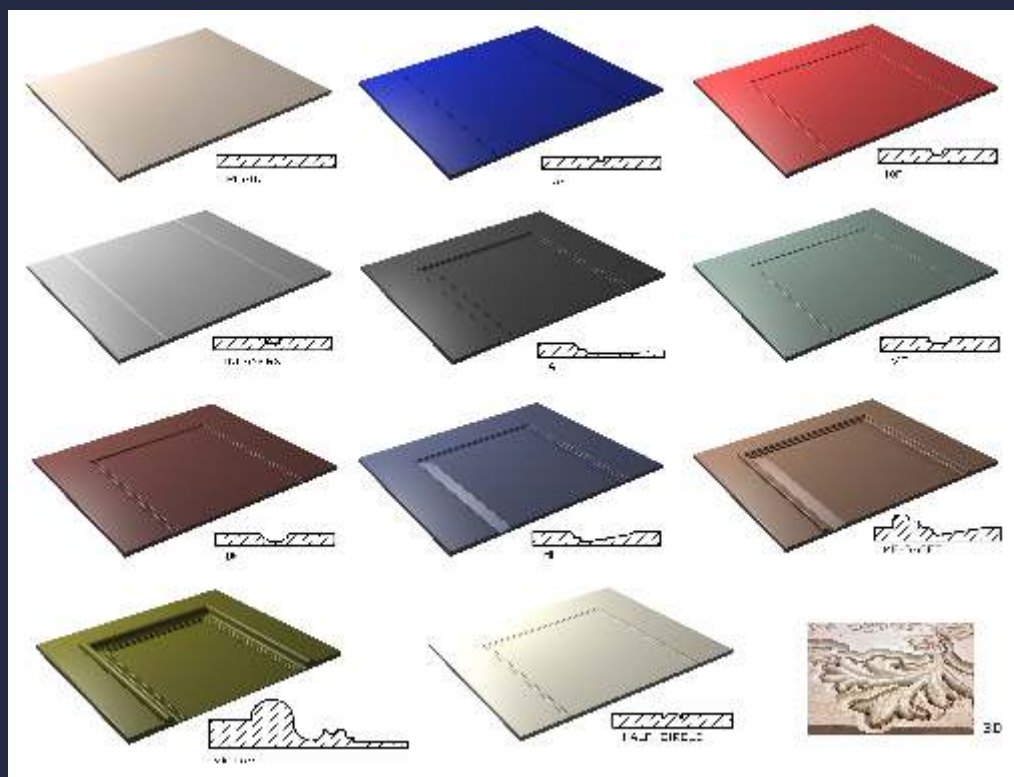
# COLOURS OF WRB (OKOUME)





## COLOURS OF PVC FILM

For interior conditions only



## DOORMILLING TYPES



# SECURITY CLASSES

The main feature of our doors is security. Here you can learn about European and American security classes, differences in testing methods and choose the right DOOR WORLD door model based on your security needs.

## Classes of burglar resistance according to the European standard

Security class RC	Burglar type	Application	DOOR WORLD door model
1	Basic protection against burglary by the use of physical force.	Premises without increased risk of burglary.	CLASS 1
RC3	Experienced burglar uses heavy duty drilling and hammering tools.	High level of security for the premises in view of increased risk of burglary.	CLASS 3
RC4	Experienced burglar additionally uses electric saws and power drilling tools.	Extra high level of housing protection in view of high risk of burglary.	CLASS 4



Fig. 5. Phosphorylation of the  $\alpha$ -tubulin.

Leahy, N. (2002). *Women, Gender and the Environment*. London: Earthscan Publications Ltd.

$$A_2 = \{A_1 \in \mathcal{A} : \exists A_3 \in \mathcal{A} \text{ s.t. } A_1 \cap A_3 = \emptyset\}$$

© 2000 Blackwell Science Ltd, *Journal of Internal Medicine* 247: 105–112

© 1999, 2000, 2001, 2002, 2003, 2004, 2005, 2006, 2007, 2008, 2009, 2010, 2011, 2012, 2013, 2014, 2015, 2016, 2017, 2018, 2019, 2020, 2021, 2022, 2023, 2024, 2025, 2026, 2027, 2028, 2029, 2030, 2031, 2032, 2033, 2034, 2035, 2036, 2037, 2038, 2039, 2040, 2041, 2042, 2043, 2044, 2045, 2046, 2047, 2048, 2049, 2050, 2051, 2052, 2053, 2054, 2055, 2056, 2057, 2058, 2059, 2060, 2061, 2062, 2063, 2064, 2065, 2066, 2067, 2068, 2069, 2070, 2071, 2072, 2073, 2074, 2075, 2076, 2077, 2078, 2079, 2080, 2081, 2082, 2083, 2084, 2085, 2086, 2087, 2088, 2089, 2090, 2091, 2092, 2093, 2094, 2095, 2096, 2097, 2098, 2099, 2100, 2101, 2102, 2103, 2104, 2105, 2106, 2107, 2108, 2109, 2110, 2111, 2112, 2113, 2114, 2115, 2116, 2117, 2118, 2119, 2120, 2121, 2122, 2123, 2124, 2125, 2126, 2127, 2128, 2129, 2130, 2131, 2132, 2133, 2134, 2135, 2136, 2137, 2138, 2139, 2140, 2141, 2142, 2143, 2144, 2145, 2146, 2147, 2148, 2149, 2150, 2151, 2152, 2153, 2154, 2155, 2156, 2157, 2158, 2159, 2160, 2161, 2162, 2163, 2164, 2165, 2166, 2167, 2168, 2169, 2170, 2171, 2172, 2173, 2174, 2175, 2176, 2177, 2178, 2179, 2180, 2181, 2182, 2183, 2184, 2185, 2186, 2187, 2188, 2189, 2190, 2191, 2192, 2193, 2194, 2195, 2196, 2197, 2198, 2199, 2200, 2201, 2202, 2203, 2204, 2205, 2206, 2207, 2208, 2209, 2210, 2211, 2212, 2213, 2214, 2215, 2216, 2217, 2218, 2219, 2220, 2221, 2222, 2223, 2224, 2225, 2226, 2227, 2228, 2229, 2230, 2231, 2232, 2233, 2234, 2235, 2236, 2237, 2238, 2239, 2240, 2241, 2242, 2243, 2244, 2245, 2246, 2247, 2248, 2249, 2250, 2251, 2252, 2253, 2254, 2255, 2256, 2257, 2258, 2259, 2260, 2261, 2262, 2263, 2264, 2265, 2266, 2267, 2268, 2269, 2270, 2271, 2272, 2273, 2274, 2275, 2276, 2277, 2278, 2279, 2280, 2281, 2282, 2283, 2284, 2285, 2286, 2287, 2288, 2289, 2290, 2291, 2292, 2293, 2294, 2295, 2296, 2297, 2298, 2299, 2300, 2301, 2302, 2303, 2304, 2305, 2306, 2307, 2308, 2309, 2310, 2311, 2312, 2313, 2314, 2315, 2316, 2317, 2318, 2319, 2320, 2321, 2322, 2323, 2324, 2325, 2326, 2327, 2328, 2329, 2330, 2331, 2332, 2333, 2334, 2335, 2336, 2337, 2338, 2339, 2340, 2341, 2342, 2343, 2344, 2345, 2346, 2347, 2348, 2349, 2350, 2351, 2352, 2353, 2354, 2355, 2356, 2357, 2358, 2359, 2360, 2361, 2362, 2363, 2364, 2365, 2366, 2367, 2368, 2369, 2370, 2371, 2372, 2373, 2374, 2375, 2376, 2377, 2378, 2379, 2380, 2381, 2382, 2383, 2384, 2385, 2386, 2387, 2388, 2389, 2390, 2391, 2392, 2393, 2394, 2395, 2396, 2397, 2398, 2399, 2400, 2401, 2402, 2403, 2404, 2405, 2406, 2407, 2408, 2409, 2410, 2411, 2412, 2413, 2414, 2415, 2416, 2417, 2418, 2419, 2420, 2421, 2422, 2423, 2424, 2425, 2426, 2427, 2428, 2429, 2430, 2431, 2432, 2433, 2434, 2435, 2436, 2437, 2438, 2439, 2440, 2441, 2442, 2443, 2444, 2445, 2446, 2447, 2448, 2449, 2450, 2451, 2452, 2453, 2454, 2455, 2456, 2457, 2458, 2459, 2460, 2461, 2462, 2463, 2464, 2465, 2466, 2467, 2468, 2469, 2470, 2471, 2472, 2473, 2474, 2475, 2476, 2477, 2478, 2479, 2480, 2481, 2482, 2483, 2484, 2485, 2486, 2487, 2488, 2489, 2490, 2491, 2492, 2493, 2494, 2495, 2496, 2497, 2498, 2499, 2500, 2501, 2502, 2503, 2504, 2505, 2506, 2507, 2508, 2509, 2510, 2511, 2512, 2513, 2514, 2515, 2516, 2517, 2518, 2519, 2520, 2521, 2522, 2523, 2524, 2525, 2526, 2527, 2528, 2529, 2530, 2531, 2532, 2533, 2534, 2535, 2536, 2537, 2538, 2539, 2540, 2541, 2542, 2543, 2544, 2545, 2546, 2547, 2548, 2549, 2550, 2551, 2552, 2553, 2554, 2555, 2556, 2557, 2558, 2559, 2560, 2561, 2562, 2563, 2564, 2565, 2566, 2567, 2568, 2569, 2570, 2571, 2572, 2573, 2574, 2575, 2576, 2577, 2578, 2579, 2580, 2581, 2582, 2583, 2584, 2585, 2586, 2587, 2588, 2589, 2590, 2591, 2592, 2593, 2594, 2595, 2596, 2597, 2598, 2599, 2600, 2601, 2602, 2603, 2604, 2605, 2606, 2607, 2608, 2609, 2610, 2611, 2612, 2613, 2614, 2615, 2616, 2617, 2618, 2619, 2620, 2621, 2622, 2623, 2624, 2625, 2626, 2627, 2628, 2629, 2630, 2631, 2632, 2633, 2634, 2635, 2636, 2637, 2638, 2639, 2640, 2641, 2642, 2643, 2644, 2645, 2646, 2647, 2648, 2649, 2650, 2651, 2652, 2653, 2654, 2655, 2656, 2657, 2658, 2659, 2660, 2661, 2662, 2663, 2664, 2665, 2666, 2667, 2668, 2669, 2670, 2671, 2672, 2673, 2674, 2675, 2676, 2677, 2678, 2679, 2680,

© 2000 Blackwell Science Ltd, *Journal of Internal Medicine* 247: 399–405

[illegible]

<sup>a</sup>Calculated from the following equation:  $\text{Calculated } \text{K}_{\text{sp}} = \frac{[\text{Mg}^{2+}][\text{CO}_3^{2-}]}{[\text{MgCO}_3]}$ .  $\text{K}_{\text{sp}}$  values were calculated from the solubility data of  $\text{MgCO}_3$  in the presence of  $\text{CO}_2$  and  $\text{H}_2\text{O}$  at 25°C and 1 atm.

[illegible]

Dr. J. H. Miller, Jr., and Dr. J. H. Miller, Jr.





*VISIT OUR WEBSITE*

*<https://luxsecuritydoors.co.uk>*

*Email: [info@luxsecuritydoors.co.uk](mailto:info@luxsecuritydoors.co.uk)*

*Tel: 01923 372977*

*Mobile: 07565375597*

